

Schedule – 6

Energy Efficient Induction Motors-Three Phase Squirrel Cage

The test procedure, schedule of tests, rating plan and other parameters in respect of General Purpose Motors is as follows:

1. Scope

- 1.1. This standard specifies the requirements for participating in the energy labeling scheme for 3 phase squirrel cage induction motor in 2 Pole and 4 Pole for continuous duty (S1) operation at suitable for voltage and frequency variation as per IS 12615 with the following output rating 0.37kW, 0.55kW, 0.75 kW, 1.1 kW, 1.5 kW, 2.2 kW, 3.7 kW, 5.5 kW, 7.5 kW, 9.3 kW, 11 kW and 15 kW.
- 1.2 The referred Indian Standard are IS 12615: 2004, IS: 4029 – 1967, IS 325: 1996 including all the amendments.

2. Schedule of Tests:

2.1 Method of Tests:

The testing code and procedure would be as per IS: 4029 – 1967, with all amendments.

2.2 Parameters to be tested:

Parameters for initial, verification and challenge testing are the mandatory type test parameters listed under clause 22.3.1 of IS 325: 1996 and including all amendments as of date.

3. Conditions of compliance:

For compliance with the requirements of this standard, the values of efficiency is subject to IS 325 tolerance, listed under appropriate efficiency class (either improved efficiency – eff2 or high efficiency – eff1) in Tables 1 and 2 of IS 12615: 2004. Operating at rated voltage and rated frequency, the performance of the motor at rated conditions shall be as specified in Tables 1 and 2 of IS 12615: 2004.

4. Tolerance limits:

All the performance values are subject to tolerance as specified in IS 325: 1996.

5. Sampling for check and challenge Testing:

2 samples of each polarity and 2 samples of each frame size

6. Qualifications:

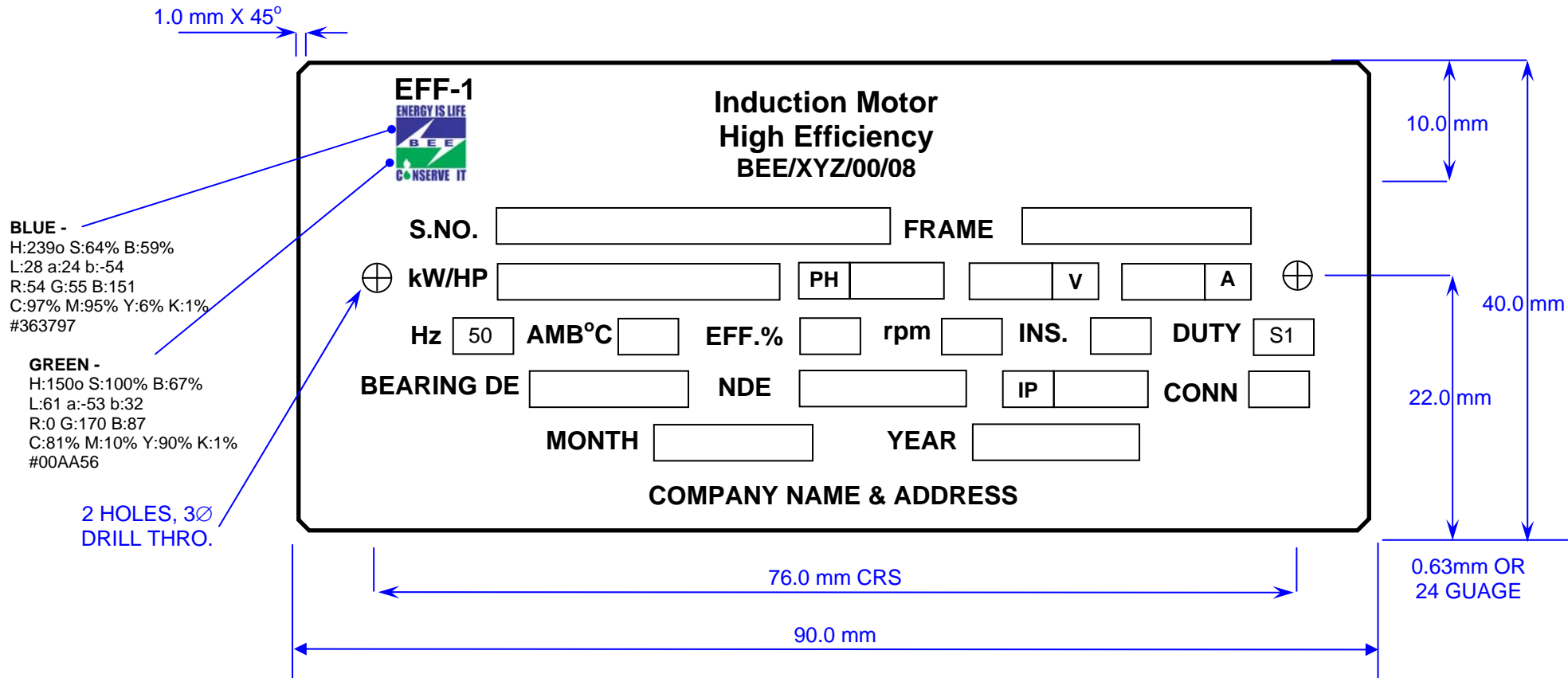
- a) The products should conform to minimum requirements of IS 12615: 2004 to participate in BEE S&L Programme.
- b) The motor shall either carry BIS certification mark or the organization should be certified against IS/ISO 9000 or above to participate in BEE Standards and Labeling programme.

7. Label content, manner of display:

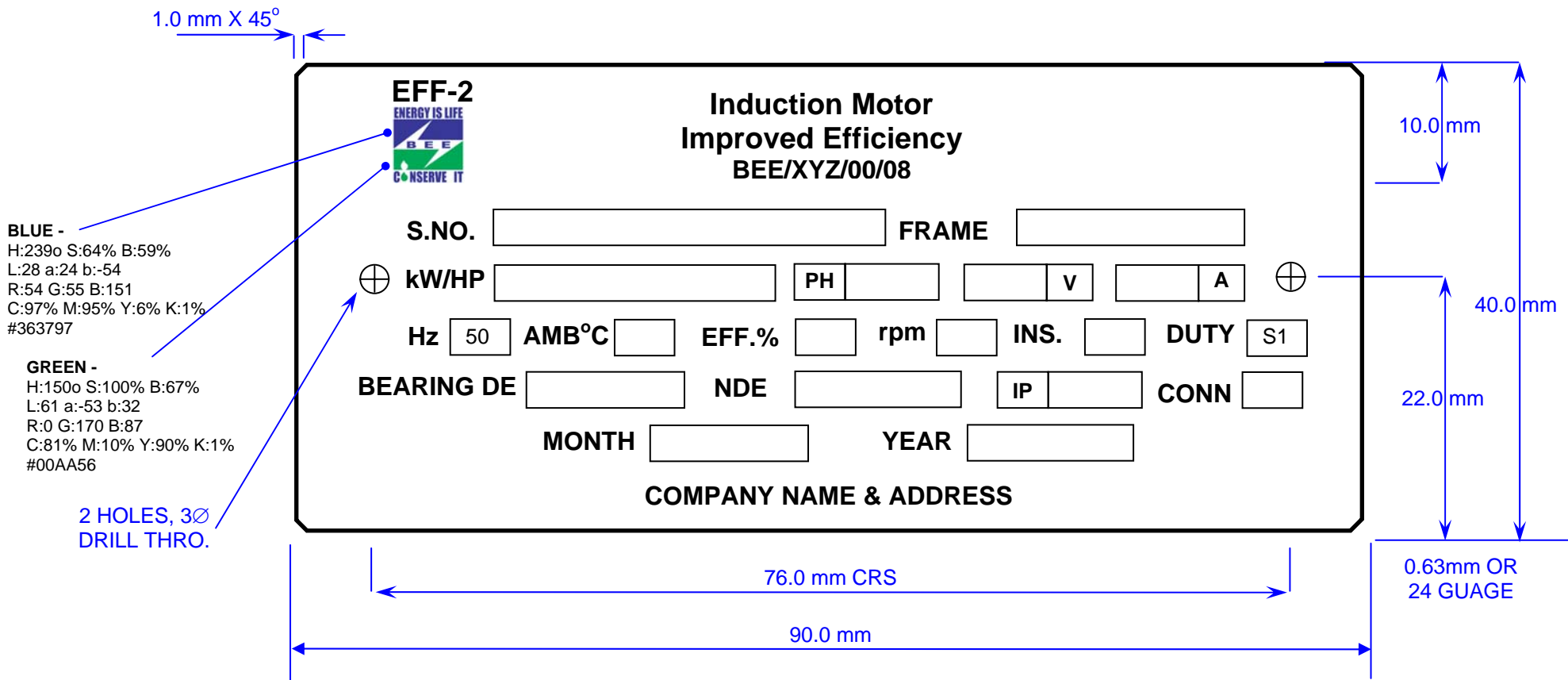
1. The parameters spelt out in clause 20.1 a to t of IS 325: 1996 shall be marked on the label. In addition the BEE logo, license number and the marking of either improved efficiency – eff2 or high efficiency – eff1 shall be displayed on the top left hand corner.
2. Manner of display of label:
The contents of the label along with the BEE logo and license number shall be displayed on the top left hand corner of the label. The contents shall be embossed on 24 gauge steel plate or any suitable metal screwed or riveted on the motor on the front side.

8. Labeling Fees

1. Registration fee is payable on application for authority to affix labels is Rs. 1000/- (*Rupees one thousand only*)
2. Registration fee is payable on application for renewal of authority to affix labels is Rs. 500/- (*Rupees five hundred only*)
3. Labeling fee for affixation of label on each General purpose motor is Rs. 5/- (*Five rupee only*).



Induction Motor Label Details – EFF1



Induction Motor Label Details – EFF2