

Name : Pandya Piyushkumar H
 Company Name : Reliance Energy Limited.
 Designation : Addl.Manager(Electrical)
 Address : C-10/4,BSES Colony,
 Dahanu Road, Dist-Thane, Maharashtra-401608.
 Phone No : 952528-225001-10.
 Fax No. : 952528-222576
 E-mail ID : Piyushkumar.pandya@rel.co.in

Measurement of Performance parameters is the prerequisite for any energy conservation/Efficiency decision-making measures. The data collection and presentation forms an important step following the measurement. Presentation of aggregated data helps top management teams to identify the gray areas to starts corrective action promptly. The idea to present the data with pop-up explanation is very innovative and requires extensive study as specific energy consumption parameters depends upon the different business processes of each kind of industry. However; some of the common indicators can be identified and towards that direction, I have honestly attempt to expand the Pop-up explanation table citing some of common reasons for Increased/Decreased specific energy and cost parameters.

As I belongs to Thermal Power plant, I have attempt to address the issues and graph for our Dahanu Thermal Power station of Reliance Energy with Heat rate and cost as the variable parameters against financial year 2003-04 year. As I am attempting first time for such kind of report writing, I hope some of the lapses will be corrected with your guidance and will guide for more defined writing in futures.

I express my sincere regards for giving such an opportunity to apply ones thought on the subject and deriving sets of formulated reason-cause matrix to help all industry by participation and implementing Aggregated data reporting system under BEE umbrella.

Expanded Table for Reasons for Increased/Decreased specific consumption or cost list.

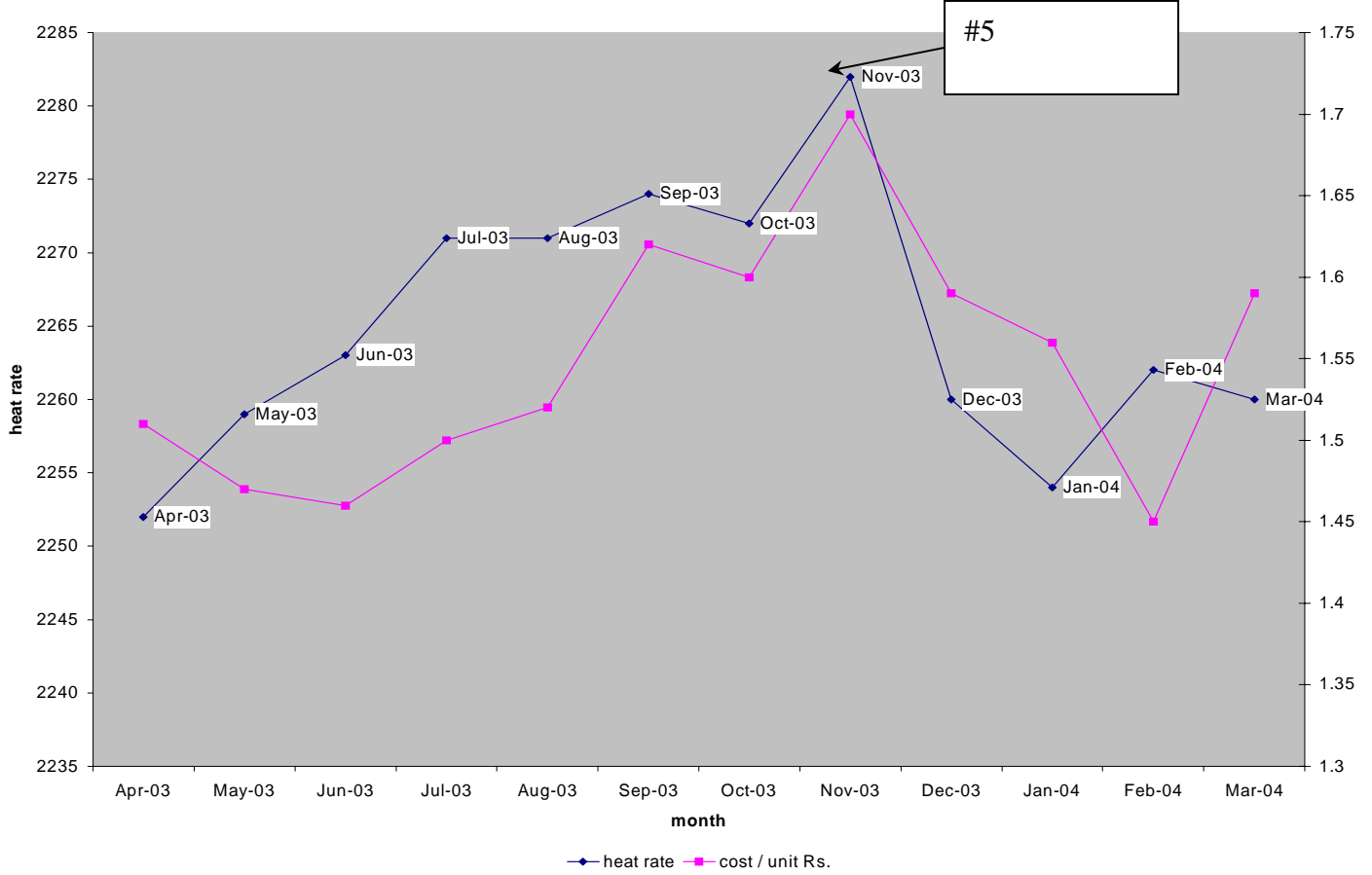
#	Reasons of increased energy consumption KWh/unit output	Reasons for increased energy cost Rs./unit output.
1.	Quality of raw material/fuel deteriorated	Raw material/Fuel cost increases.
2.	Transportation loss increased.	Inferior quality of fuel used
3.	Deviation in optimum process parameters.	Operating expanses increased.
4.	Output reduces due to demand constrain.	Higher interest rates on Loan/Debt
5.	Unplanned breakdowns seriously affecting the output.	Govt.policy change affecting the capital and running cost.
6	Ageing of Equipment /Plant.	

#	Reasons of Decreased energy consumption KWh/unit output	Reasons for Decreased energy cost Rs./unit output.
1.	Better process control.	Fuel and other raw material cost reduce.
2.	Optimum use of raw material/fuel.	Most efficient use of raw material/fuel.
3.	Better maintenance planning system by which unplanned breakdown minimized.	Better process control and optimization achieved..
4.	Output expands due to new market opening and reach.	Output increased due to business synergies and debottlenecks in delivery systems.
5.	Good quality control system.	-
6	Minimization of wastage and leakages.	-

Datasheet for Heat rate and Cost/Unit for year 2003-04.

Month	Heat rate	Cost/Unit (Rs.)
Apr-03	2252	1.51
May-03	2259	1.47
Jun-03	2263	1.46
July-03	2271	1.50
Aug-03	2271	1.52
Sept-03	2274	1.62
Oct-03	2272	1.60
Nov-03	2282	1.70
Dec-03	2260	1.59
Jan-04	2254	1.56
Feb-04	2262	1.45
March-04	2260	1.59

Heat rate & Cost / unit 2003-04



Real case graph for year 2003-04 with month wise Specific energy consumption and cost as the variable for Dahanu Thermal Power Station of Reliance Energy Limited.