

Name : V.K.R. Warriier  
Designation : Manager – Technical Services  
Company Name : Bayer ABS Ltd  
Address : 51 GIDC Estate, Nandesari – 391340  
Vadodara  
Fax No : 0265 – 2840827  
E\_mail ID : vijayan.warrier.vw@bayer-ag.de

**Bayer ABS Ltd**

**Nandesari**

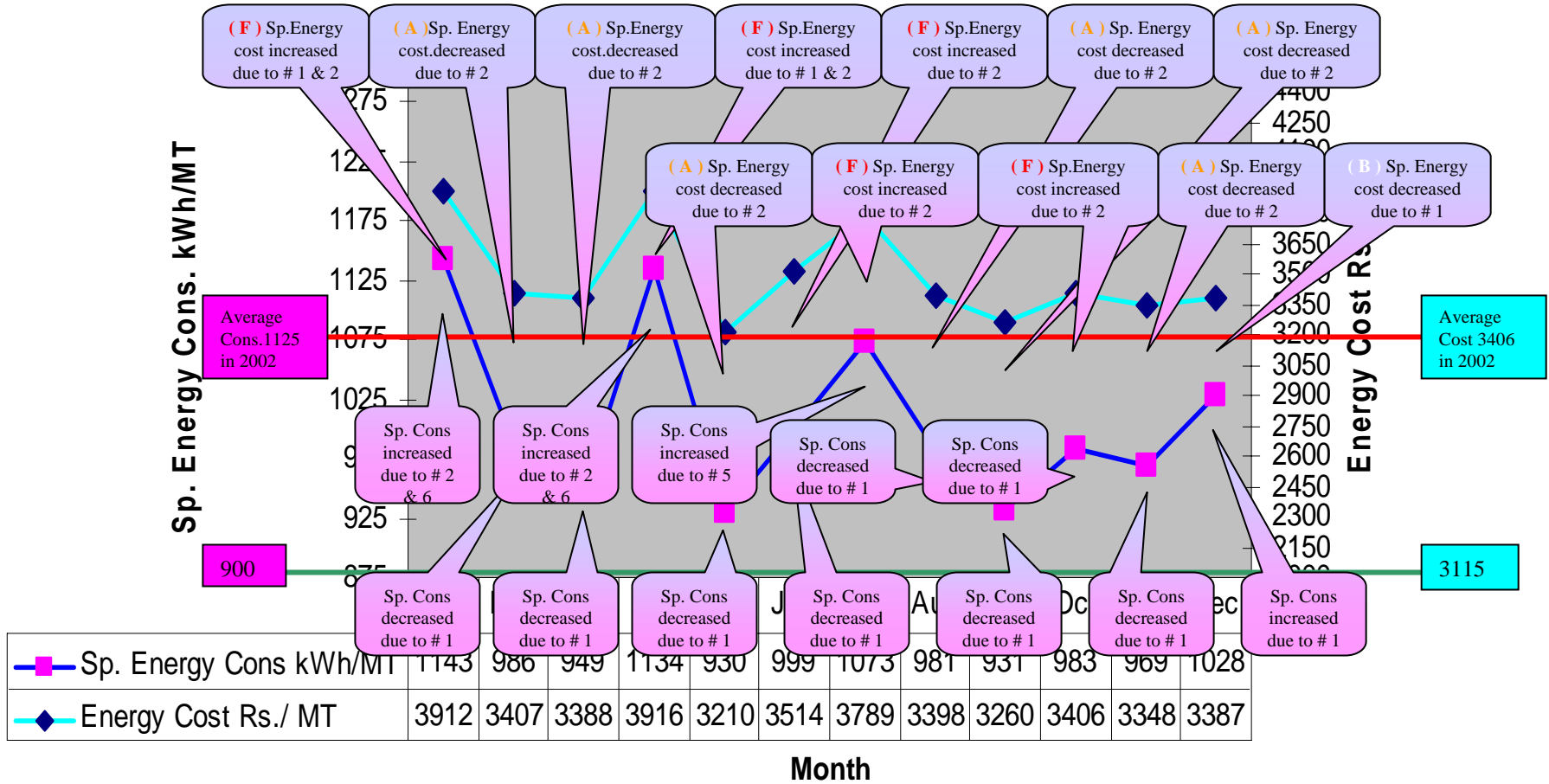
Item Manufactured : ABS Plastics ( Resin )

Source of power supply : Gujarat Electricity Board

Fuel used : Furnace Oil

Date: 12 – 08 - 2004

# Bayer ABS Ltd, Nandesari Energy Performance - 2003



## Bayer ABS Ltd - Nandesari

| # | <b>Reason of increased energy consumption<br/>kWh/ Unit out put</b> | # | <b>Reason for increased energy cost<br/>Rs./Unit output</b>  |
|---|---|---|--|
| 1 | Increase in forced outages  | 1 | Fuel cost increased  |
| 2 | Increase in scheduled outages                                       | 2 | Specific consumption increased                               |
| 3 | Labour unrest   | 3 | Output mix changed to more energy intensive products         |
| 4 | Reduction in output due to lack of fuel                             |   |  |
| 5 | Reduction in output due to lack of resource material                |   |  |
| 6 | Reduction in out put due to high inventory                          |   |  |
| # | <b>Reason of decreased energy consumption<br/>kWh / Unit output</b> | # | <b>Reason for decreased energy cost<br/>Rs./ Unit output</b> |
| 1 | Decrease in forced outages  | 1 | Specific consumption reduced                                 |
| 2 | Decrease in scheduled outage  | 2 | Fuel cost decreased  |

| #  | Month                  | Rs / kWh        |
|----|------------------------|-----------------|
|    | <i>2002 Avg. value</i> | <i>Rs. 3.31</i> |
| 1  | Jan – 03               | Rs. 3.42        |
| 2  | Feb – 03               | Rs. 3.46        |
| 3  | Mar – 03               | Rs. 3.57        |
| 4  | Apr – 03               | Rs. 3.45        |
| 5  | May – 03               | Rs. 3.45        |
| 6  | Jun – 03               | Rs. 3.52        |
| 7  | Jul – 03               | Rs. 3.53        |
| 8  | Aug – 03               | Rs. 3.46        |
| 9  | Sep – 03               | Rs. 3.50        |
| 10 | Oct – 03               | Rs. 3.47        |
| 11 | Nov – 03               | Rs. 3.45        |
| 12 | Dec – 03               | Rs. 3.29        |
|    | <i>2003 Avg. value</i> | <i>Rs. 3.46</i> |

- Average values of Sp. Energy Consumption and Energy cost in 2002 are 1125 & 3406 respectively.
- Line of Zero loss has been assumed to be **900 kWh / MT** and corresponding Energy cost of **Rs. 3115 / MT**. Scale has adjusted for 2002 consumption and cost

| <b>Month</b> | <b>kWh saving potential</b> | <b>Saving potential in Rs.</b> |
|--------------|-----------------------------|--------------------------------|
| Jan – 03     | 602628                      | 1976521.00                     |
| Feb – 03     | 261863                      | 889115.00                      |
| Mar – 03     | 164518                      | 916600.00                      |
| Apr – 03     | 584250                      | 1999932.00                     |
| May – 03     | 105785                      | 334987.00                      |
| Jun – 03     | 291684                      | 1175575.00                     |
| Jul – 03     | 449226                      | 1750163.00                     |
| Aug – 03     | 259881                      | 907981.00                      |
| Sep – 03     | 105210                      | 492113.00                      |
| Oct – 03     | 287634                      | 1008450.00                     |
| Nov – 03     | 228014                      | 769961.00                      |
| Dec – 03     | 455182                      | 967261.00                      |
| <b>Total</b> | <b>3795875</b>              | <b>13188658.00</b>             |