

## Unit Profile:-

Mahindra & mahindra automotive division is in the business of manufacturing Utility vehicles, SUV 's and LCV's in the plants located at Mumbai, Nasik, and Igatpuri in Maharashtra & Zaheerabad in AndhraPradesh. The total sales turnover of the Nasik unit is around 2209 crores. M&M is leader in this segment and has a market share of 50 percent. Various main products manufactured at Nasik unit are Scorpio, Bolero, Marshal, MAXX, Pickups and spares for these vehicles. M&M have a product Design activity, which is a part of product development process, located at R&D centre Nasik.

M&M Nasik plant received Quality system certificate TS16949 in the year 2003 & ISO 14001 in the year 2004.

Scorpio is M&M's first indigenously developed sports utility vehicle launched in June 2002 , manufactured at M&M Nasik unit. Scorpio is declared "Car of the year" by CNBC Auto car, BBC wheels and business standard motoring in the year 2003. The company's automotive division also exports its products to several countries in Africa, Asia, European and Latin American countries.

## Energy Consumption:-

There is a reduction in specific energy consumption (consumption /Eq. Vehicle) due to implementation of various energy conservation measures and improved productivity. In the year 2002-2003 there was increase in specific energy consumption because the Scorpio plant & New paint shop were commissioned.

There is drastic reduction in the specific water consumption due to conservation measures implemented and use of recycled ETP water for gardening.

Description	Unit	2001-2002	2002-2003	2003-2004
Annual Eq. Vehicle production	Nos	42929	54790	74310
Total electrical consm. Per annum	Lacs Kwh	210.54	282.48	312.75
Specific energy consumption – Electrical	Kwh/Eq. Vehicle	417	474	386
Total thermal (Fuel) consm. Per annum	Mkcal	23656.89	31493.17	28729.56
Specific energy consm.- Thermal(Fuel)	Mkcal/Eq. vehicles	0.55	0.57	0.39
Water consumed	KL	414393	529736	513678
Water consm./Eq. Vehicle	KL/Eq. Vehicle	9.65	9.67	6.91

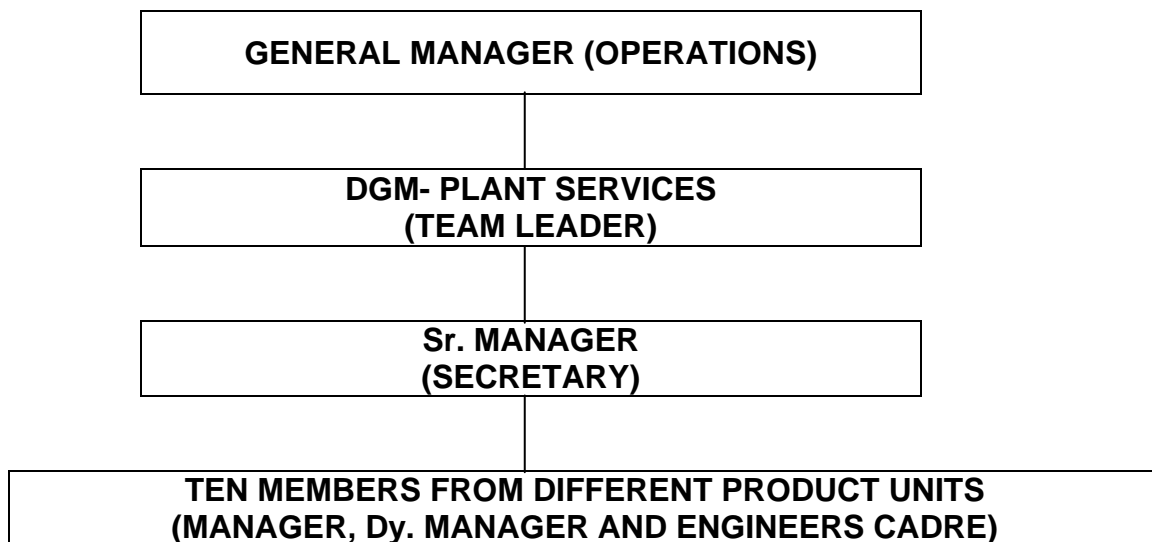
**Energy Conservation Policy & Organisational Set up:-**

Mahindra & Mahindra Ltd, A.S,Nasik emphasises on all types of energy conservation which consists of Electricity, Thermal, Water and Compressed air. Energy conservation measures are planned, reviewed periodically & budget provisions are made.

**ENERGY MANAGEMENT POLICY:-**

- **Promote Energy Saving and conservation of resources.**
- **Use of non-conventional sources of energy.**
- **Comply with the Energy Legislation and other regulations.**
- **Promote use of Energy Efficient Alternatives and use of alternative fuels.**
- **Communicate Energy Management Policy to all employees and encourage their involvement through training and participation.**
- **Create awareness among all employees for innovative ideas towards Conservation of energy.**
- **Minimise waste generation and promote disposal, reuse and recycling in an Environment friendly manner.**
- **To make an effort to reduce the cost continuously every year by adopting effective "Energy Management System"**

**ECON CELL STRUCTURE:-**



**ECON meeting is held on every alternate Tuesday of the month to review, discuss energy conservation potentials, techno-commercial viability, budget provisions and implementation plans.<sup>1</sup>**

## **ENERGY MANAGEMENT POLICY**

We at Mahindra & Mahindra Ltd, Automotive Sector are in the business of Designing & Manufacturing Multi Utility Vehicles with the image of low cost manufacturer and customer satisfaction through the process of continuous improvements in all areas of operations.

**We are committed to :**

- Promote Energy Saving and conservation of resources.
- Use of non-conventional sources of energy.
- Comply with the Energy Legislation and other regulations.
- Promote use of Energy Efficient Alternatives and use of alternative fuels.
- Communicate Energy Management Policy to all employees and encourage their involvement through training and participation.
- Create awareness among all employees for innovative ideas towards Conservation of energy.
- Minimise waste generation and promote disposal, reuse and recycling in an Environment friendly manner.
- To make an effort to reduce the cost continuously every year by adopting effective "Energy Management System"



**V.V. Raghavan**  
Vice President-Order Management.  
Automotive Sector.

## Environment & Safety :

### **AN ENVIRONMENT**

Mahindra & Mahindra Ltd. is committed to “Protect the Environment, Prevention & Control of Pollution, Minimise the Waste Generation, Promote Energy Saving and Conservation of Resources.” An “Environmental Policy” duly signed and documented is provided expressing our commitment towards the EMS.

The company has successfully obtained the Environment Management Certificate of ISO 14001 in the month of June 2004 from M/S. RWTuV of India. Efforts are being made for the achievement of the goals of Legal Compliance, Proper Waste disposal, Promote recycling and reuse of waste / Materials, etc. during the implementation and after the certification of the Environment Management System.

Company has installed Effluent Treatment Plant and the treated effluent is being used for Gardening spread over the area of about 1.00 Lac M2. Company has installed Bio-Gas plant for processing Canteen solid Waste to generate a cooking gas for its use at canteen and a Solar Energy unit for heating the water at canteen. An Oil Separation unit is installed to prevent the Water Pollution before its disposal through ETP / STP.

Company has undertaken the projects of providing a Sewage Treatment Plant and an Acoustic Insulation for the Generator House to prevent the Noise Pollution.

### **SAFETY**

Industrial Safety is an integral and essential part of every operation / process in Mahindra & Mahindra at Nasik.

#### **Following practices are used to motivate Safety in plant:**

- Plant level Safety committee is at place. Staff / workers involvement in safety committee is there. Regular meetings are conducted to review the Safety concerns and accident reduction.
- Product Unit head is involved during the Safety Patrol rounds. Line managers and operators motivate reduction in accidents.
- Regular safety meetings at PU level are conducted to review the safety issues.
- Yearly Safety and HAZOP studies are conducted. The report is reviewed to take corrective action for the observations in report.
- Weekly SHE sub-committee is meeting to discuss and implement the safety procedures and find solutions on short falls to adopt safe practices. SHE sub committee operates on the guide lines of TPM (Total Productive Maintenance)