

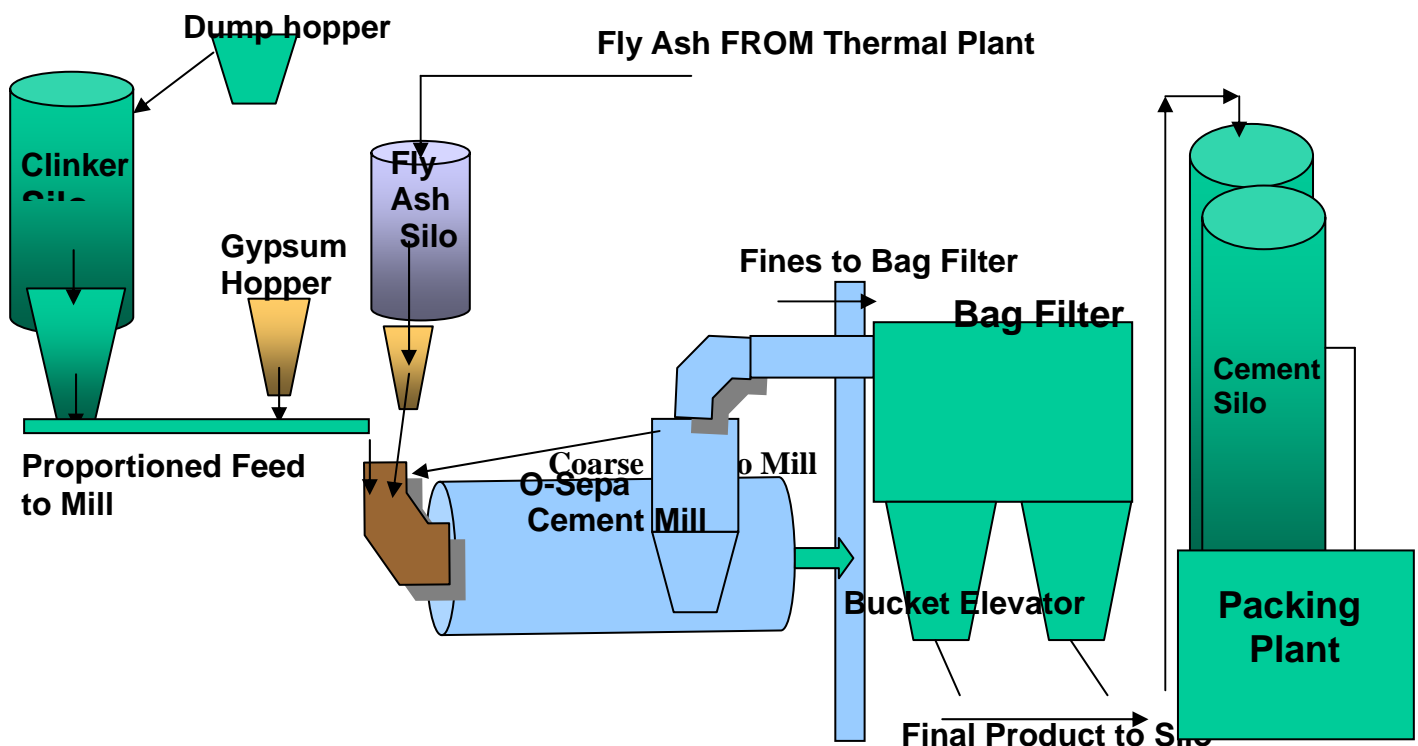
Birla Plus Cement

Lehra Mohabat, Bathinda (Punjab)

Birla Plus Cement is situated near village Lehra Mohabbat, District Bathinda (Punjab), has an installed capacity of one million ton per annum and primarily produces blended cement apart from OPC. Our unit has been commissioned in December 2001 with primary objective to cater Punjab region demand, which is one of the high potential market and to produce value-adding product to reduce cost of production. This cement is produced under brand name of Birla Plus Cement, which is national brand of Aditya Birla Group Cement companies. All products are being served to mainly market of Punjab. All the depots are connected with SAP network for online order placement and monitoring the day-to-day dispatch position. This enables us to cater the market effectively.

During the year 2002-03 Birla Plus becomes an ISO-9001, ISO-14001 organization, we respect all national and International laws of Environment & Safety, Financial and Production regulations applicable to cement and comply with all legislative and regulatory requirements.

Process Flow Chart

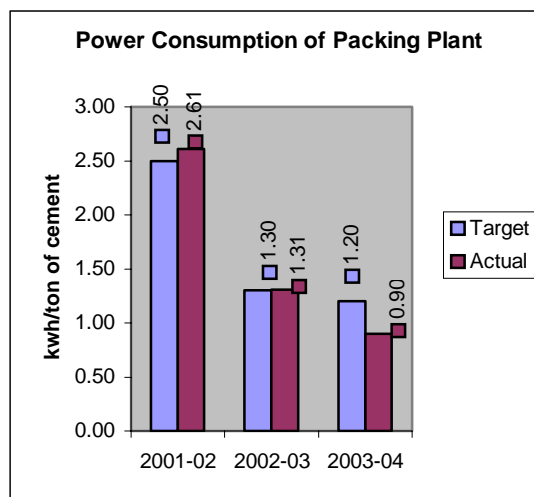
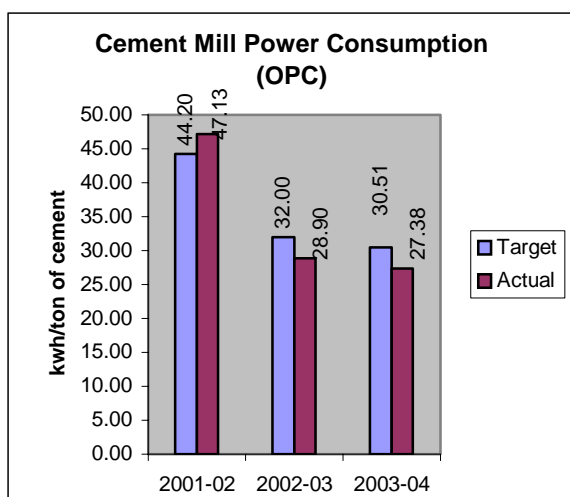


Energy Consumption:

There has been steady decrease in the Electrical Energy Consumption per ton of Cement due to Implementation of various energy conservation measures.

Description	Unit	2001-02	2002-03	2003-04
Annual Cement production	MT	129928	862985	1052859
Total Energy consumption / anum	Lacs kwh	61.18	313.18	368.19
Specific Energy consumption - Electrical	Unit/ton of cement	47.08	36.29	34.97

Year	Electricity	
	Consumption (kwh/ton of cement)	% Reduction over 2000-01
2001-02	47.08	* Plant Commissioned in Dec 2001
2002-03	36.29	22.91%
2003-04	34.97	3.63%



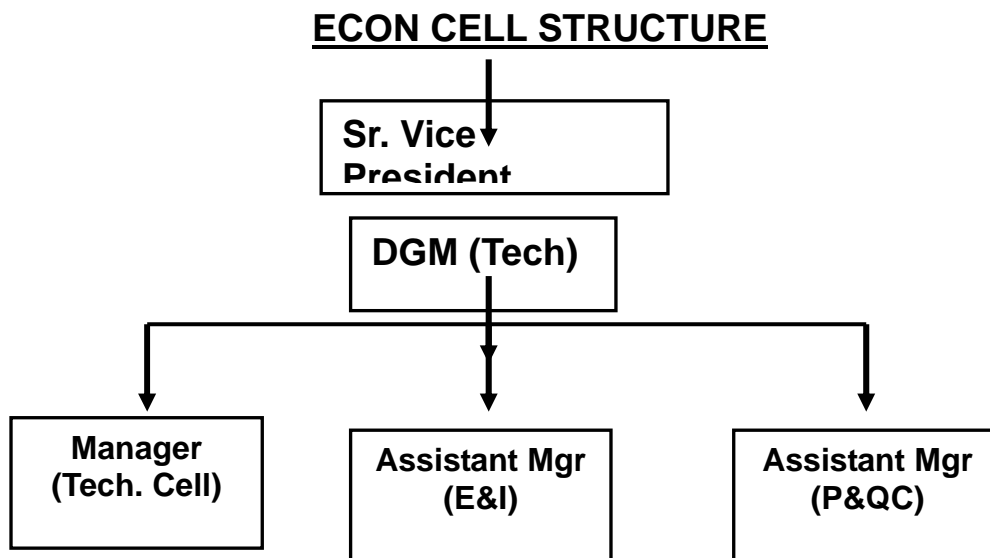
Energy Conservation Commitment Policy & Set up:

Birla Plus Cement a Cement Grinding Unit considers energy conservation as a top most priority & no budget restrictions are made for energy conservation projects. Energy conservation plans, policy and structure are reviewed periodically.

Energy Management Policy:

- Promote Energy Saving and conservation of resources.
- Use of non- conventional sources of energy.
- Comply with the Energy Legislation and other regulations.
- Promote use of Energy Efficient Alternatives and use of alternate fuels.

- Communicate Energy Management Policy to all employees and encourage their involvement through training and participation.
- Create awareness among all employees for innovate ideas towards Conservation of energy.
- Minimize waste generation and promote disposal, reuse and recycling in Environment friendly manner.
- To make an effort to reduce the cost continuously every year by adopting effective “Energy Management System”.



Energy Conservation Achievements:

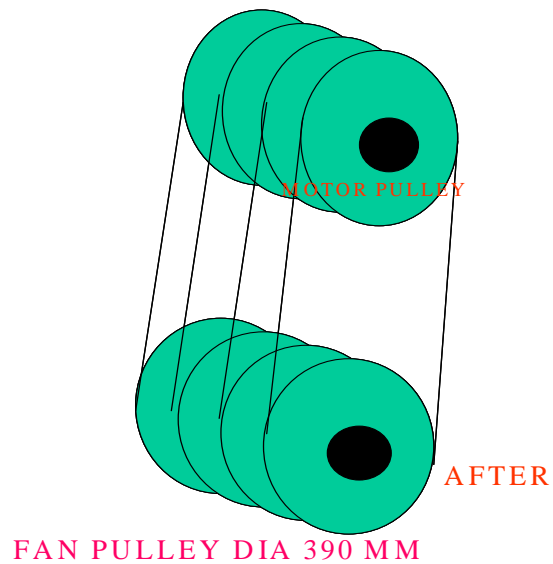
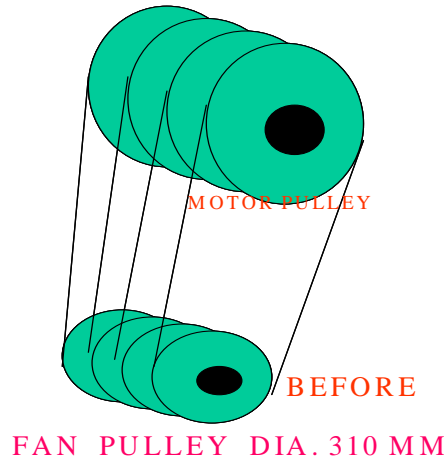
During the period From 2001 to 2004 Birla Plus Cement has implemented around 27 Energy Saving Proposal through Engineering initiatives, workmen’s suggestion scheme and TPM Methodology resulting total saving of Rs. – 913.86 lacs with the investment of Rs. – 117.32 lacs. This is resulted into reduction of 25.72%. In Specific Electrical Consumption.

CASE I-

- High power consumption due to pressure drop across damper in Bag filter Fan 821FN1 /821FN3 of packing plant.
- Above fans are operating with 50-60% damper opening, which turns in to Energy Loss.
- Reduce speed of fan by 20% and open damper position to 100% so that energy loss can be avoided without sacrificing operating efficiency.
- SAVING ACHIEVED-19.78 KW or 0.13 u/t of cement.
- **SAVING ACHIEVED IN RS. 5.07 Lacks p.a.**

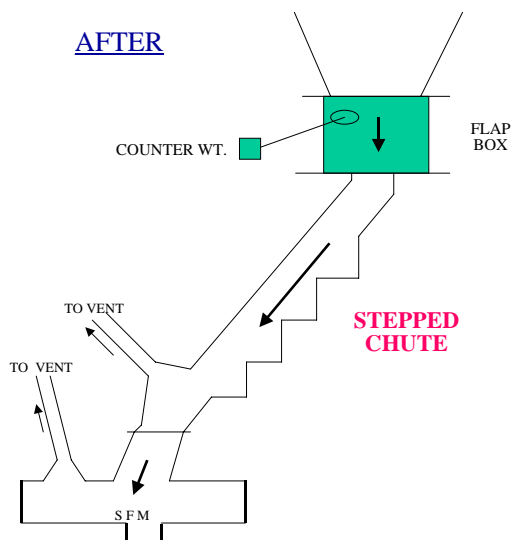
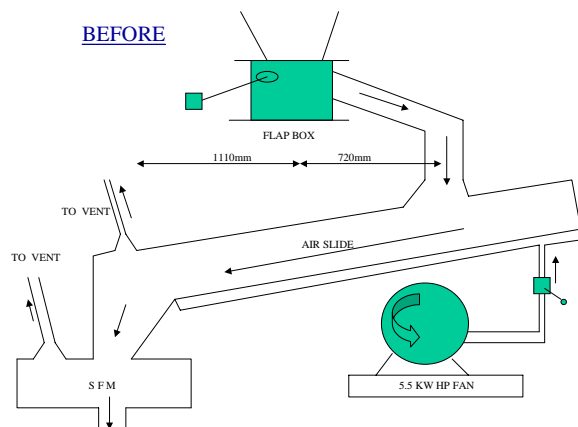
FUTURE PLANS-

Similar action is to be taken in 821 FN2&821FN4 where expected saving is 0.05u/t of cement. Also explore possibility in other bag filter fans in plant.



CASE II –

- Replacement of O-Sepa Reject air slide with normal stepped discharge chute.
- Air slide with 5.5KW drive along with blower replaced with inclined stepped chute.
- Negligible maintenance and **saving of 0.87 lacks per annum.**



CASE IV

Productivity Increase & Cost reduction due to Mill vent fan discharge material taken directly to Product Air Slide. Following advantages are achieved:

**BEFORE – MODIFICATION
AFTER – MODIFICATION
DIRECT – BENEFITS**

INTANGIBLE – BENEFITS

Productivity Increase & Cost reduction due to Mill vent fan discharge material taken directly to Product Air Slide. Following advantages are achieved:

**BEFORE – MODIFICATION
AFTER – MODIFICATION
DIRECT – BENEFITS**

INTANGIBLE – BENEFITS